

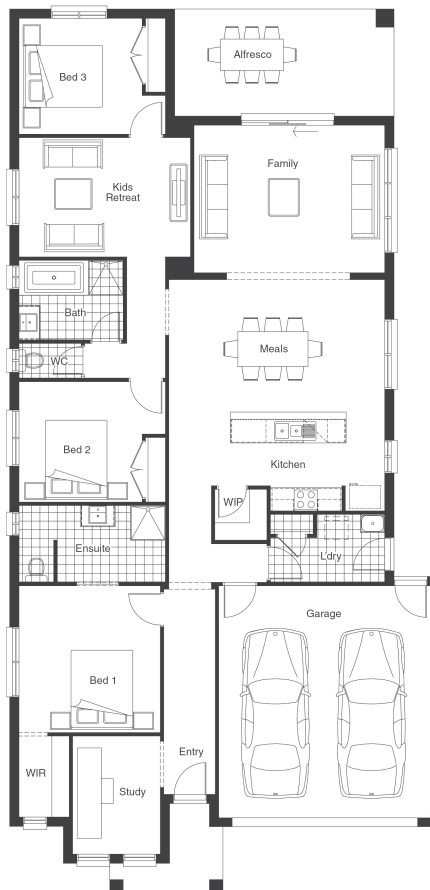


ONYX

Lot 906 Partington Street, DONNYBROOK - 400m²

YOUR LUXURY INCLUSIONS:

- Flooring throughout
- Stainless appliances
- Gas ducted heating
- Panel lift garage door
- OH&S and Council Requirements
- P Class slab
- Rock Removal
- BAL
- Opticomm
- Recycled Water
- Evaporative Cooling
- Colour Driveway



LOT WIDTH **12.5+** SQUARES **24**

LIVING	
Family	4940 x 3820
Meals	5590 x 3430
Alfresco	5680 x 2770
Kids Retreat	4440 x 3090
Study	2270 x 3060

BEDROOMS	
Bed 1	3660 x 3800
Bed 2	3190 x 3120
Bed 3	3190 x 3000

AREAS	
House Area	167.59m ²
Garage	37.16m ²
Porch	4.00m ²
Alfresco	15.73m ²

TOTAL AREAS	
TOTAL AREAS	224.48m²
House Length	22130mm
House Width	11150mm

^ 1. Price does not include \$10,000 First Home Owner Grant (FHOG) saving amount available to eligible first home buyers. 2. Granvue Homes reserves the right to change prices or terminate package without notice. 3. Includes allowance of up to 12.5 Bush fire attack level if required. 4. Subject to Land Developers Review Panel approval. 5. Price includes any current promotions, standard home design and standard facade option. Upgraded Facades not included. 6. Pricing may vary due to availability of land, increase in land prices or developer or council guidelines. Although measures have been taken to include prime costs, Granvue Homes makes no guarantees or assurances that site costs, developer or bush fire requirements are accurate at the time of publication. NB. For specific details on home inclusions as part of this package please refer to the applicable Granvue Homes inclusion sheet or ask a sales consultant for more details. This house and land package is yet to be constructed.

Call Alex Trajcevski on 0411056766
or email alex@granvuehomes.com.au