



# PEARL

Lot 2612 Prominent Road, DIGGERS REST - 315m<sup>2</sup>

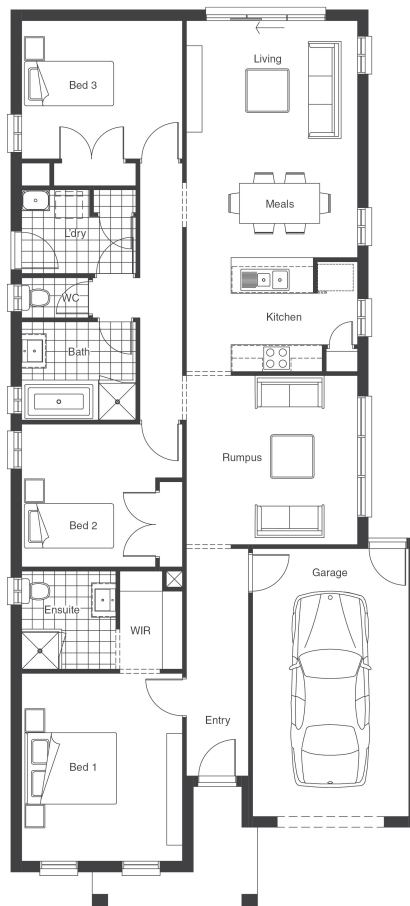
## YOUR LUXURY INCLUSIONS:

### ESSENCE INCLUSIONS

- Floor Coverings Throughout
- 2590mm High Ceilings
- Up To 20 LED down Lights
- Stone to Kitchen
- Stainless Steel Dishwasher
- Tiled Shower Bases
- Remote Controlled Garage Door
- Front Landscaping
- Colour Concrete Driveway (up to 30m<sup>2</sup>)
- Blinds to All Windows & Sliding Doors
- All Estate Developer Requirements
- OH&S and Council Requirements

- Rock Removal and Site Cost Allowance

ALL BACKED BY A GUARANTEED SITE START!



LOT WIDTH

**10.5+**

SQUARES

**18**

### LIVING AREAS

Living / Meals	5310 x 3830
Rumpus	3790 x 3830

### BEDROOMS

Bed 1	4210 x 3600
Bed 2	3200 x 3600
Bed 3	3100 x 3600

### AREAS

House Area	133.18m <sup>2</sup>
Garage	23.83m <sup>2</sup>
Porch	5.58m <sup>2</sup>

### TOTAL AREAS 162.59m<sup>2</sup>

House Length	19310mm
House Width	9150mm

^ 1. Price does not include \$10,000 First Home Owner Grant (FHOG) saving amount available to eligible first home buyers. 2. Granvue Homes reserves the right to change prices or terminate package without notice. 3. Includes allowance of up to 12.5 Bush fire attack level if required. 4. Subject to Land Developers Review Panel approval. 5. Price includes any current promotions, standard home design and standard facade option. Upgraded Facades not included. 6. Pricing may vary due to availability of land, increase in land prices or developer or council guidelines. Although measures have been taken to include prime costs, Granvue Homes makes no guarantees or assurances that site costs, developer or bush fire requirements are accurate at the time of publication. NB. For specific details on home inclusions as part of this package please refer to the applicable Granvue Homes inclusion sheet or ask a sales consultant for more details. This house and land package is yet to be constructed.

Call Rockwell Smith on 0409099662  
or email [rockwell@granvuehomes.com.au](mailto:rockwell@granvuehomes.com.au)

**Bloomdale**  
Diggers Rest

**ESSENCE**  
SERIES